

# Security Access Doors

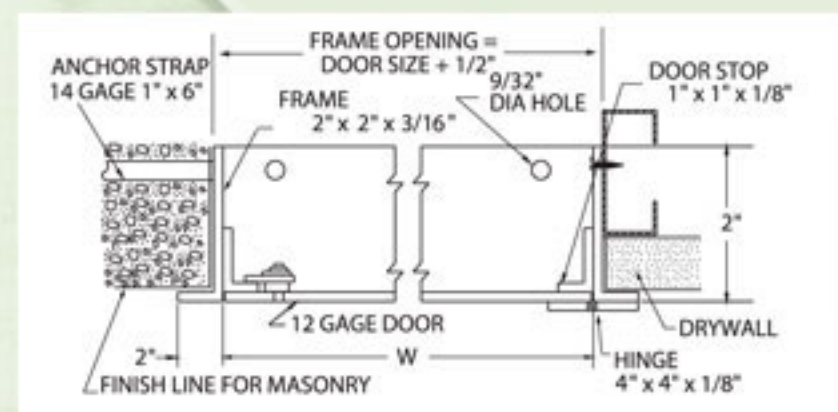
## DSB-I 23SD-MS

The DSB-123SD-MS is ideal for medium security situations such as housing projects, hospitals, or in those instances where a more secure access door is required.

### Specifications

Access doors shall be type DSB-I23SD-MS

- Frame shall be  $\frac{3}{16}$ " x 2" x 2" angle welded with joints ground smooth. Masonry anchor straps and  $\frac{1}{4}$ " mounting holes are included on all frames.
- Trim shall be 2" wide.
- Door shall be 12 gauge steel.
- Hinges shall be heavy duty and welded to door and frame.
- Locks shall be flush spanner head (tamperproof), flush to finished surface of door.
- Finish shall be prime coat of rust inhibitive electrostatic powder, baked grey enamel.



### Standard Sizes

Door Size (H x W)	Wall /Ceiling Opening	Shipping Wt. (lbs.)
12 x 12	12½ x 12½	24.0
16 x 16	16½ x 16½	32.0
18 x 18	18½ x 18½	36.0
24 x 24	24½ x 24½	52.0
36 x 24	36½ x 24½	68.0
36 x 36	36½ x 36½	95.0

Special sizes and modifications available on request.

NOVACO INDUSTRIES • 4840 Acorn, Unit 200 • Montreal, Quebec • Canada • H4C 1L6

Telephone: (579) 720-7207 • Fax: (579) 720-7227

E-Mail: [info@novaco.com](mailto:info@novaco.com) • Web Site: [www.novaco.com](http://www.novaco.com)

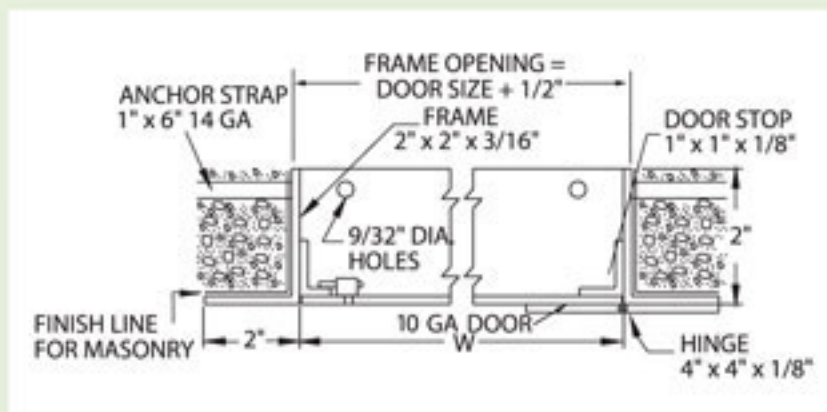
## DSB-I 23SD

The DSB-123SD enables architects and institutions to bring maximum security to areas where access is required for repair or maintenance purposes.

### Specifications

Access doors shall be type DSB-I23SD

- Frame shall be  $\frac{3}{16}$ " x 2" x 2" angle welded with joints ground smooth. Masonry anchor straps and  $\frac{1}{4}$ " mounting holes are included on all frames.
- Door shall be 10 gauge steel plate.
- Hinges shall be heavy duty and welded to door and frame.
- Locks shall be heavy duty detention type lock. Additional locking devices shall be flush spanner head cam latches.
- Finish shall be prime coat of rust inhibitive electrostatic powder, baked grey enamel.



### Standard Sizes

Door Size (H x W)	Wall/Ceiling Opening	Shipping Wt. (lbs.)
12 x 12	12½ x 12½	35.0
16 x 16	16½ x 16½	44.0
18 x 18	18½ x 18½	49.0
24 x 24	24½ x 24½	65.0
36 x 24	36½ x 24½	80.0
36 x 36	36½ x 36½	115.0