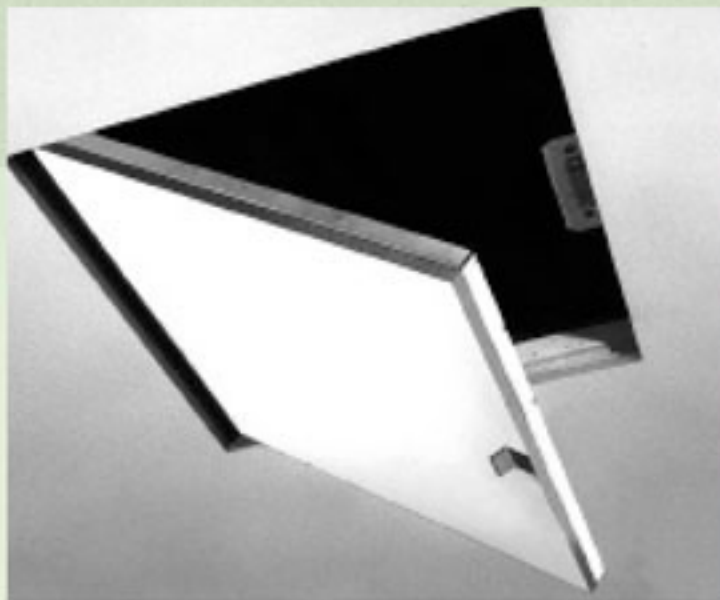


## Specialty Items



KSTDW



KSTE



KSTC

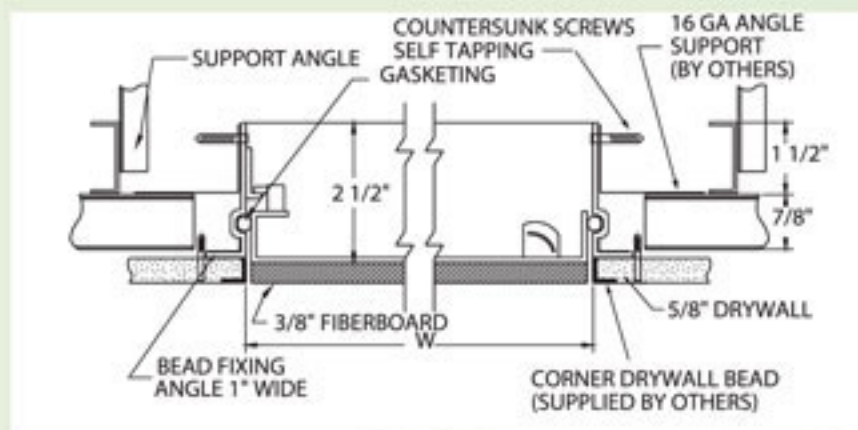
## Sesame Access Doors

The KSTDW is designed for complete concealment in drywall ceilings. The KSTC & KSTE are designed for use with concealed and exposed grid systems, respectively. Panel opens up to receive tile. Door panel on the sesame doors will open to a check position for safety and then release for a 90° opening and is removable.

### Specifications

Access doors shall be type **KSTDW, KSTC** or **KSTE**.

- Frame shall be 20 gauge galvanized steel.
- KSTDW: Door shall be 20 gauge galvanized steel and lined with  $\frac{3}{8}$ " mineral fiberboard.
- KSTC & KSTE: Door shall be 20 gauge galvanized steel.
- Gasketing shall be flame retardant polyurethane.
- Locks shall have plastic grommets and be square head key wrench operated.
- Hinge shall be concealed pivot with a controlled action device (CAD) on KSTDW model only, except for size 12" x 12".



KSTDW

KSTDW	
Standard Sizes	
Door Size* (H x W)	Shipping Wt. (lbs.)
12 x 12	8.2
18 x 18	17.6
24 x 24	28.8
36 x 24	44.4
48 x 24	51.1

KSTE & KSTC	
Standard Sizes	
Door Size* (H x W)	Shipping Wt. (lbs.)
24 x 24	17.6
48 x 24	32.6

\* Sizes are nominal for models KSTC and KSTE.  
Special sizes and modifications available on request.

**Note:** Please call Karp's Customer Service Department for framing information and installation instructions.

NOVACO INDUSTRIES • 4840 Acorn, Unit 200 • Montreal, Quebec • Canada • H4C 1L6

Telephone: (579) 720-7207 • Fax: (579) 720-7227

E-Mail: [info@novaco.com](mailto:info@novaco.com) • Web Site: [www.novaco.com](http://www.novaco.com)