

# Recessed Access Doors For Drywall or Tile Ceilings

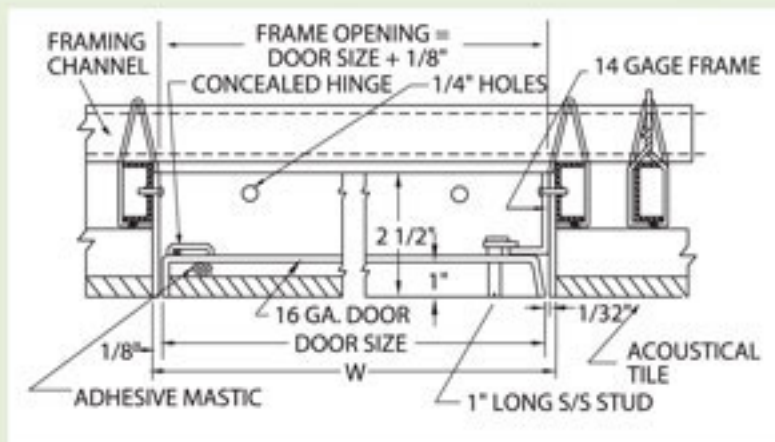
## DSC-210

The DSC-210 is designed so that all makes and types of tile thickness up to 1" fit snugly into the recess of the panel. The unique concealed pivoting bar hinge operates completely out of sight so only the metal thickness of the door and frame is visible.

### Specifications

Access doors shall be type DSC-210

- Frames shall be 14 gauge steel.
- Door shall be 16 gauge steel, recessed 1".
- Hinge shall be concealed pivoting rod type.
- Locks shall be flush to finished surface and shall be screwdriver operated with stainless steel cam and stud or cylinder lock with automatic dust shutter.
- Finish shall be prime coat of rust inhibitive electrostatic powder, baked grey enamel.



### Standard Sizes

Door Size (HxW)	Wall/Ceiling Opening	# of Stud Latches	Shipping Wt. (lbs.)
12 x 12	12 1/8 x 12 1/8	1	6.7
18 x 18	18 1/8 x 18 1/8	2	12.4
24 x 12	24 1/8 x 12 1/8	2	10.6
24 x 24	24 1/8 x 24 1/8	2	19.2
36 x 24	36 1/8 x 24 1/8	2	32.0

## KATR

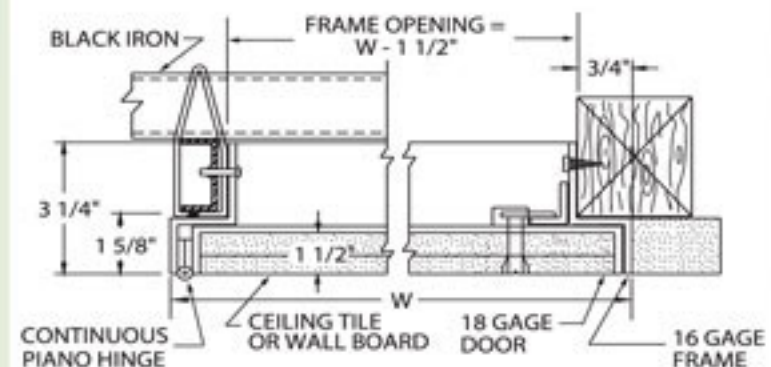
The KATR is designed to provide access in a suspended drywall ceiling that is part of a fire rated floor-ceiling assembly. The combination of steel and double thickness of drywall maintains the fire resistive qualities of the floor-ceiling assembly.

### Specifications

Access doors shall be type KATR

- Frame shall be 16 gauge steel.
- Door shall be 18 gauge steel, recessed 1 1/2" to accommodate double thickness of drywall.
- Hinge shall be exposed continuous piano hinge.
- Locks shall be flush, screwdriver operated with stainless steel cam and stud or cylinder lock with dust shutter.
- Finish shall be prime coat of rust inhibitive electrostatic powder, baked grey enamel.

The KATR does not have any fire rated certification.



### Standard Sizes

Door Size (HxW)	Wall/Ceiling Opening	# of Stud Latches	Shipping Wt. (lbs.)
12 x 12	10 1/2 x 10 1/2	1	6.7
18 x 18	16 1/2 x 16 1/2	2	11.6
24 x 24	22 1/2 x 22 1/2	2	18.1
30 x 22	28 1/2 x 20 1/2	2	19.5

Special sizes and modifications available on request.

NOVACO INDUSTRIES • 4840 Acorn, Unit 200 • Montreal, Quebec • Canada • H4C 1L6

Telephone: (579) 720-7207 • Fax: (579) 720-7227

E-Mail: [info@novaco.com](mailto:info@novaco.com) • Web Site: [www.novaco.com](http://www.novaco.com)